

SIZE GUIDE

The Arneiro Ring sizing guide

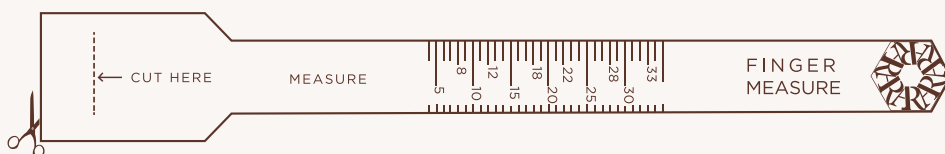
MEDIDA ARNEIRO	DIÂMETRO (mm)	CIRCUNFERÊNCIA INTERIOR (mm)	PORTUGAL ESPAÑA HOLANDA SUIÇA ITÁLIA BRASIL INDIA	EUROPA (NORMA ISO)	REINO UNIDO IRLANDA AUSTRALIA NOVA ZELÂNDIA ÁFRICA DO SUL	U.S.A CANADÁ MÉXICO	RÚSSIA UCRÂNIA BIELORRÚSIA	JAPÃO CHINA COREIA HONG KONG TAIWAN SINGAPURA
6	14.6	46	6	46	G 3/4	3 3/4	14.75	6
7	15.0	47	7	47	H 1/2	4	15	7
8	15.3	48	8	48	H 1/2	4 1/2	15.25	8
9	15.6	49	9	49	J 1/4	4 3/4	15.5	9
10	15.9	50	10	50	K	5 1/4	16	9.5
11	16.2	51	11	51	K 3/4	5 3/4	16.25	10.5
12	16.6	52	12	52	L 1/2	6	16.5	11.5
13	16.9	53	13	53	M 1/2	6 1/2	16.75	12.5
14	17.2	54	14	54	N 1/4	6 3/4	17.25	13.5
15	17.5	55	15	55	O	7 1/4	17.5	14.5
16	17.8	56	16	56	O 3/4	7 1/2	17.75	15.5
17	18.1	57	17	57	P 1/2	8	18.25	16.5
18	18.5	58	18	58	Q 1/2	8 1/2	18.5	17.5
19	18.8	59	19	59	R 1/4	8 3/4	18.75	18.5
20	19.1	60	20	60	S	9 1/4	19	19.5
21	19.4	61	21	61	S 3/4	9 1/2	19.5	20.5
22	19.7	62	22	62	T 1/2	10	19.75	21
23	20.1	63	23	63	U 1/2	10 1/4	20	22
24	20.4	64	24	64	V 1/4	10 3/4	20.25	23
25	20.7	65	25	65	W	11	20.75	24
26	21.0	66	26	66	W 3/4	11 1/2	21	25
27	21.3	67	27	67	X 1/2	12	21.25	26
28	21.6	68	28	68	Y 1/2	12 1/4	21.75	27
29	22.0	69	29	69	Z 1/4	12 3/4	22	28
30	22.3	70	30	70	Z + 1	13	22.25	29

INSTRUCTIONS FOR USE:

1. Print this page on a sheet of A4 paper (actual size) and cut out the "FINGER MEASURE" at the bottom of this page.
2. Cut along the dotted line and insert the outer perimeter of the Finger Measure through the cut.
3. Wrap the Finger Measure around your finger, making sure that the measurements remain visible.
4. Position the Finger Measure on the widest section of your finger.
5. Adjust the Finger Measure until it fits snugly around your finger. Your ring size will be indicated next to the cut.



FINGER MEASURE :



You will be able to verify the precision of your measurement with the scale on the right. Sizes are indicated in centimeters and inches.

You will be able to verify the precision of your measurement with the scale on the right. Sizes are indicated in centimeters and inches.



SIZE GUIDE

The Arneiro Ring sizing guide

MEASURING AN EXISTING RING

Print this page on a sheet of A4 paper (actual size) and place an existing ring on the following chart until one of the circles coincides with the interior diameter of your ring. If the measurement of your ring falls between two sizes, we recommend that you order the larger size.



HOW TO FIND THE SIZE OF YOUR RING

1. Select one of your rings that you intend to use on the finger for which you are choosing a new ring.
2. Place that ring in the circles presented in the figure on the side of the page to determine your correct size.
3. The circle should correspond exactly with the size of your ring. Verify that the contour of the circle is visible within the diameter of the ring.
4. If your ring falls between two sizes, choose the larger size.

You will be able to verify the precision of your measurement with the scale on the right. Sizes are indicated in centimeters and inches.



SIZE GUIDE

Arneiro Sizing Guide for necklace

Arneiro¹⁹⁶⁹
JEWELLERY

HOW TO DETERMINE YOUR NECKLACE SIZE

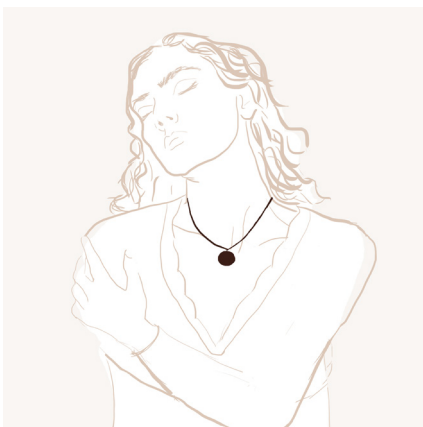
Arneiro has created some illustrations for you to visualize the diverse Necklace lengths available. The average height of our models is approximately 169 centimeters.



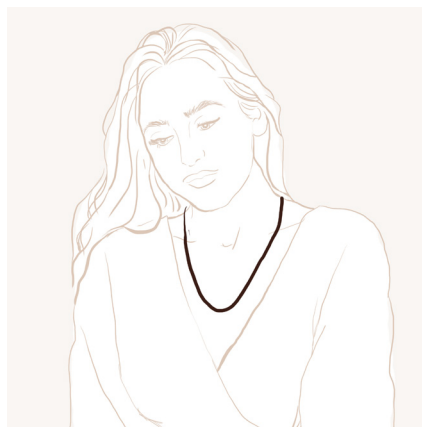
NECKLACE 30 - 33 CM



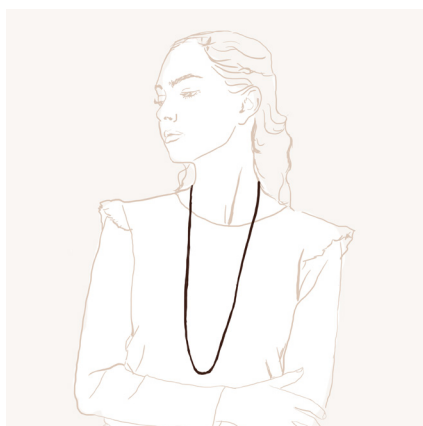
NECKLACE 35 - 42 CM



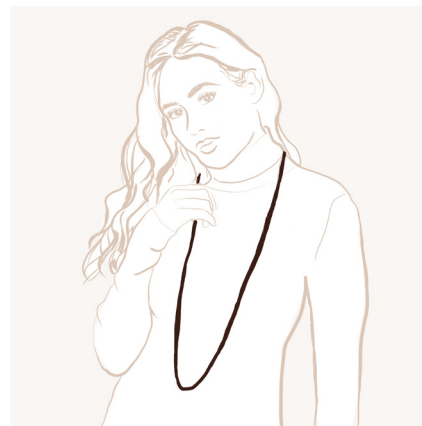
NECKLACE 43 - 50CM



NECKLACE 50 - 62 CM



NECKLACE 70 - 90 CM



LONG NECKLACE ABOVE 115CM

SIZE GUIDE

Arneiro sizing guide for bracelets

Arneiro¹⁹⁶⁹
JEWELLERY

OPTION A: HOW TO DETERMINE YOUR BRACELET SIZE

1. Choose one of your favourite bracelets.
2. Close the bracelet, place it on a table and trace the approximate circumference.
3. Using a measuring tape, measure the interior of the circumference.
4. Choose an Arneiro bracelet size that is the closest possible to this measurement.

OPTION B: MEASURING YOUR WRIST FOR BRACELETS WITH A CLASP

1. Wrap a measuring tape around your wrist.
 2. Take note of the measurement that appears on the tape.
 3. Compare that measurement with the sizes available at Arneiro.
 4. So that your bracelet will be most comfortable, add 1.5 centimeters to your measurement.
- You may add or remove centimeters if you prefer a looser or more tight-fitting bracelet.



OPTION C: MEASURE THE PALM OF YOUR HAND FOR BANGLE BRACELETS OR BRACELETS WITHOUT A CLASP

1. Wrap a measuring tape around the palm of your hand (as if you were putting on a bracelet).
 2. Take note of the measurement that appears on the tape.
 3. Compare that measurement to the bracelet sizes available from Arneiro.
 4. So that your bracelet fits best, add 1,5 centimeters to your measurement.
- You may add or remove centimeters if you prefer a looser or more tight-fitting bracelet.

